

# WATER FOR EVERYBODY



ISO standards responds to water problems

*#WorldWaterDay*

## WASTE OF WATER

Every year, there are about **45 million m<sup>3</sup>** of water loss with an annual value of **3,000 million dollars**.

Decreasing half of the loss will provide enough water to **90 million people**.

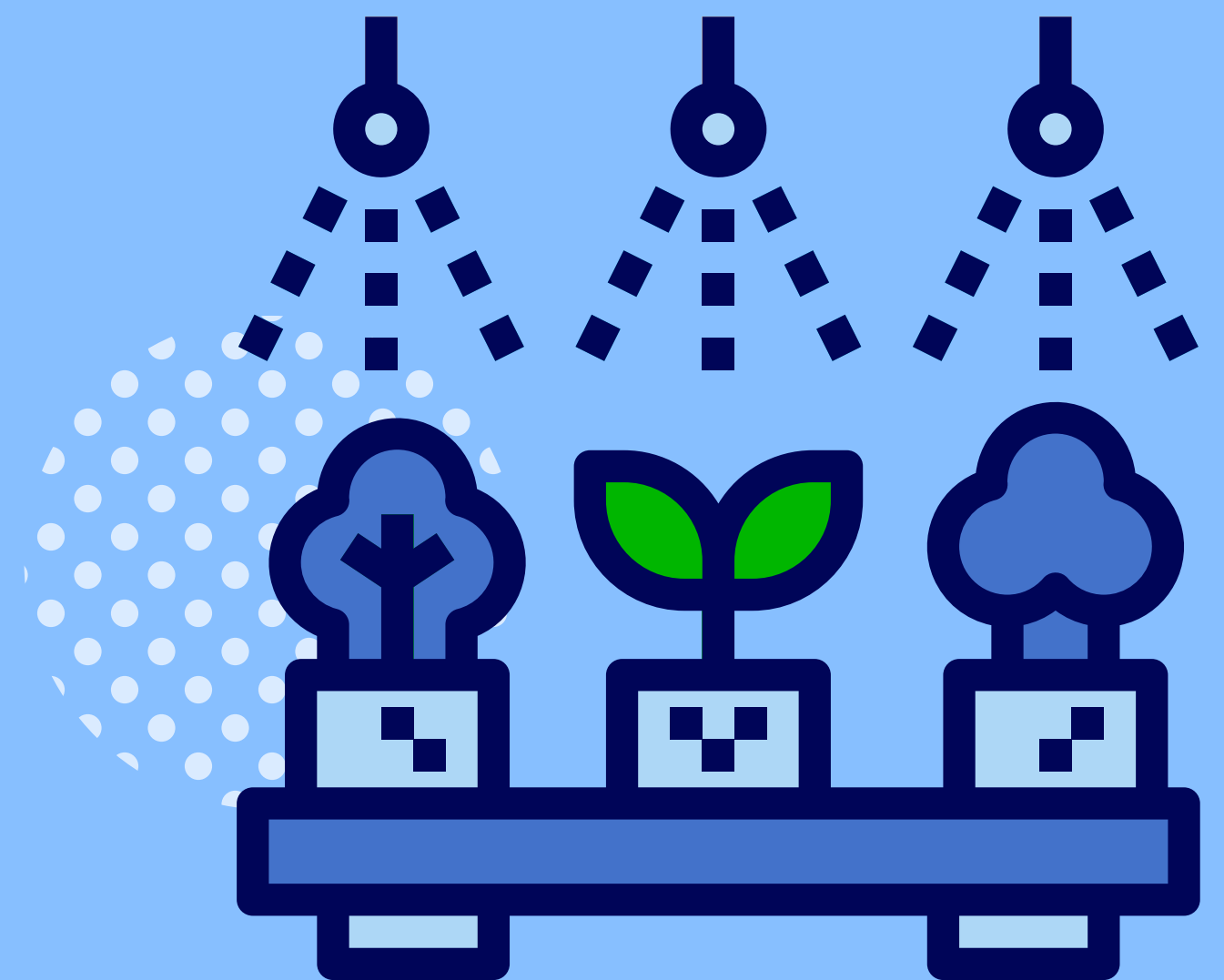
*The future ISO 24528 will establish guidelines for reducing water loss in urban supply systems.*



## RISKS

Agriculture activities spend **70%** of the worldwide consumption of water.

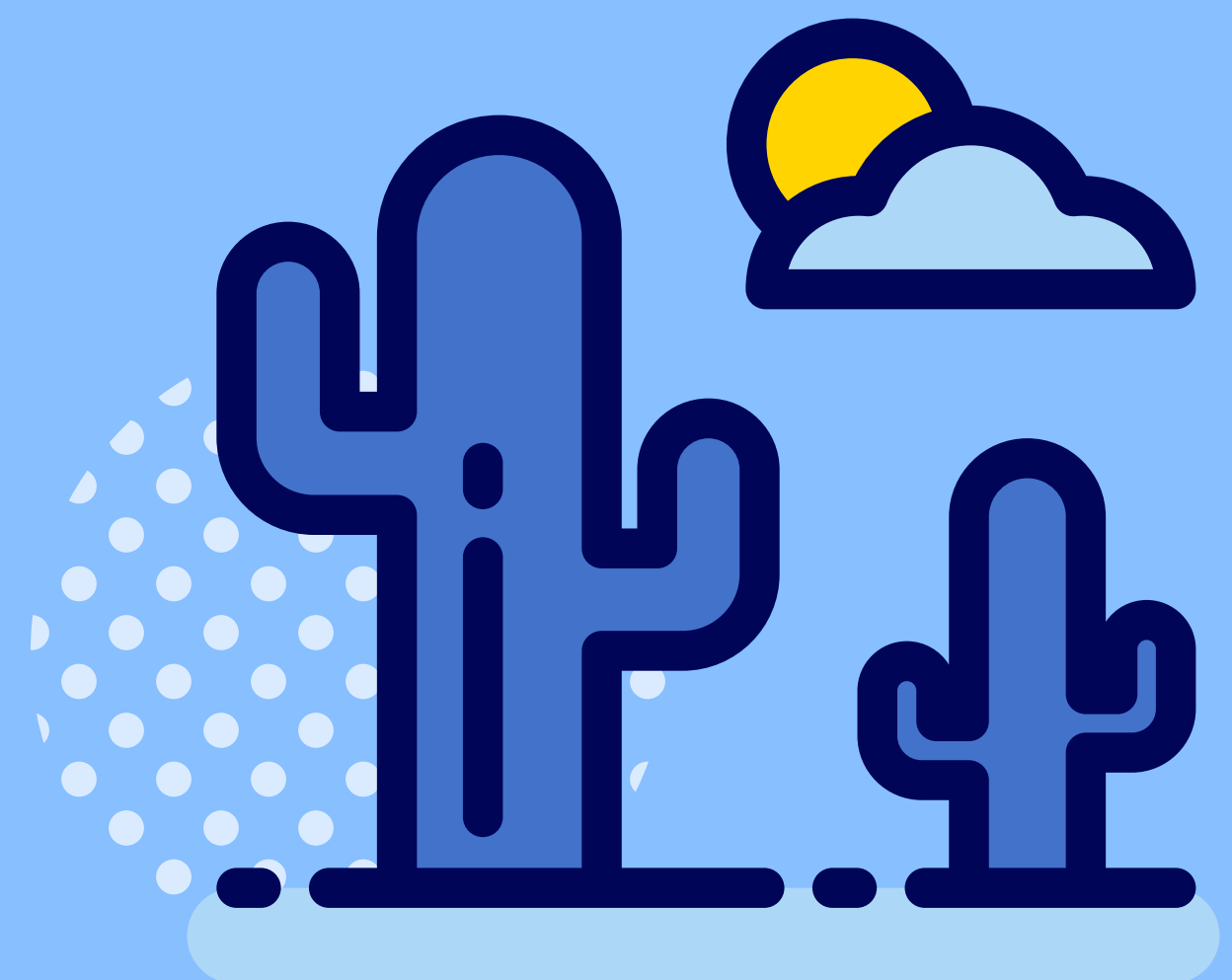
**ISO 16075-1** leads basic guidelines to reuse sewage water.



## DESERTIFICATION

In 2030, around **24 to 700 million** people will move in dry and semidry areas due to the lack of water.

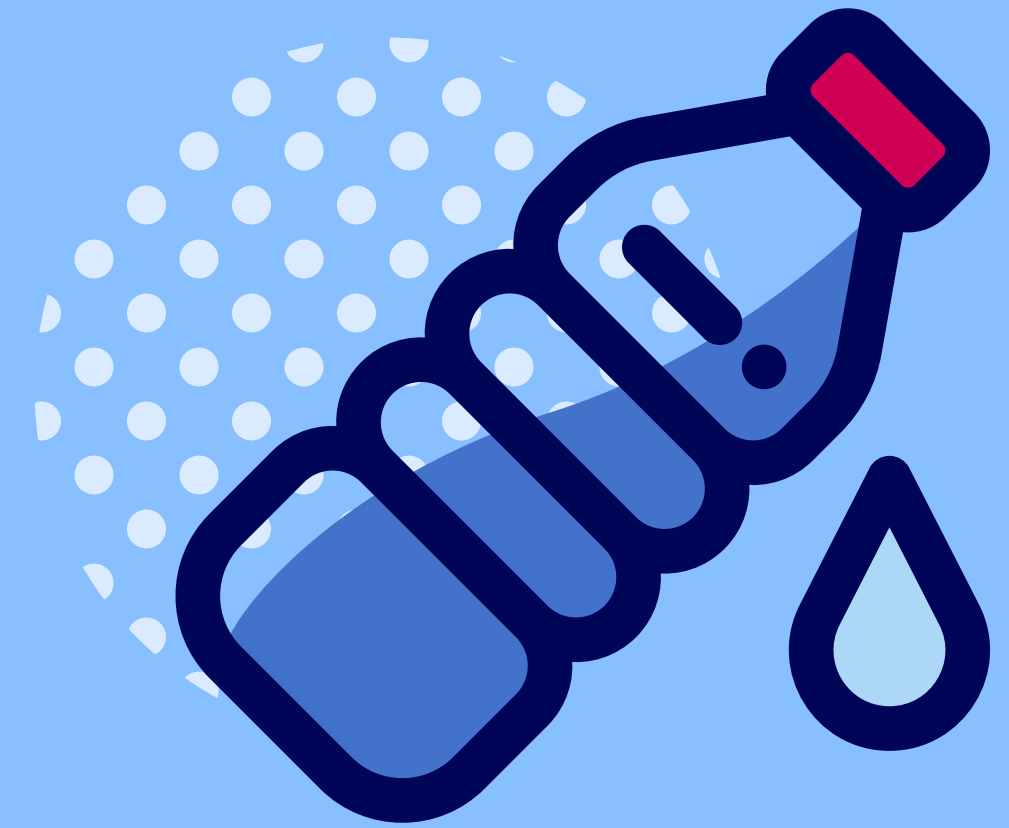
**ISO 14055-1** helps to establish good practices against deterioration and desertification of soil.



## DRINKING WATER

Only **5,200 million people** use safe drinking water.

*ISO 24512 supports the existence of drinking water service.*



## INDUSTRIAL POLLUTION

In **2050**, the world consumption water demand will rise to **55%** due to production.

*ISO 14046 helps companies to monitor their water footprint.*

*ISO 22524 is a model bread for facilities treating industrial sewage water to reuse it.*



## SEWAGE WATER

Overall, **80% of sewage water** comes back to the ecosystem without being treated.

*ISO 24516-3 assists in wastewater collection systems by improving the managing water asset.*



## SANITATION

At list, **68% of the world's population** has access to basic sanitation.

*ISO 24521 provides the guidelines to manage basic services in on-site sewage water.*

