

# **BRCGS** MODULES: DRIVING EXCELLENCE AND TRUST



### What is it?

A global standard that provides a framework for managing the safety, integrity, and quality of food products.

### Key features:

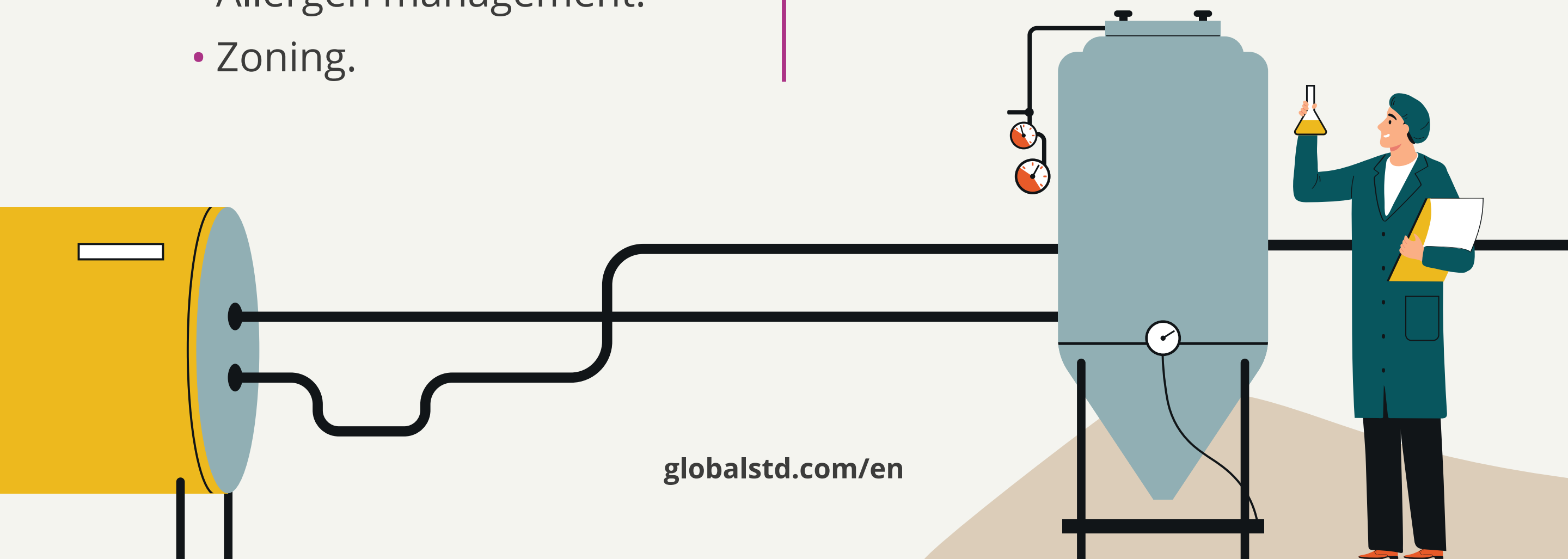
- Food safety culture.
- Senior management commitment.
- HACCP system.
- Allergen management.
- Zoning.

### Who is it for?

- Food processors.
- Ingredient manufacturers.

### Benefits:

- Consumer protection.
- Risk reduction.
- Access to international markets.



### What is it?

A standard that ensures packaging materials are safe for their intended use.

### Key features:

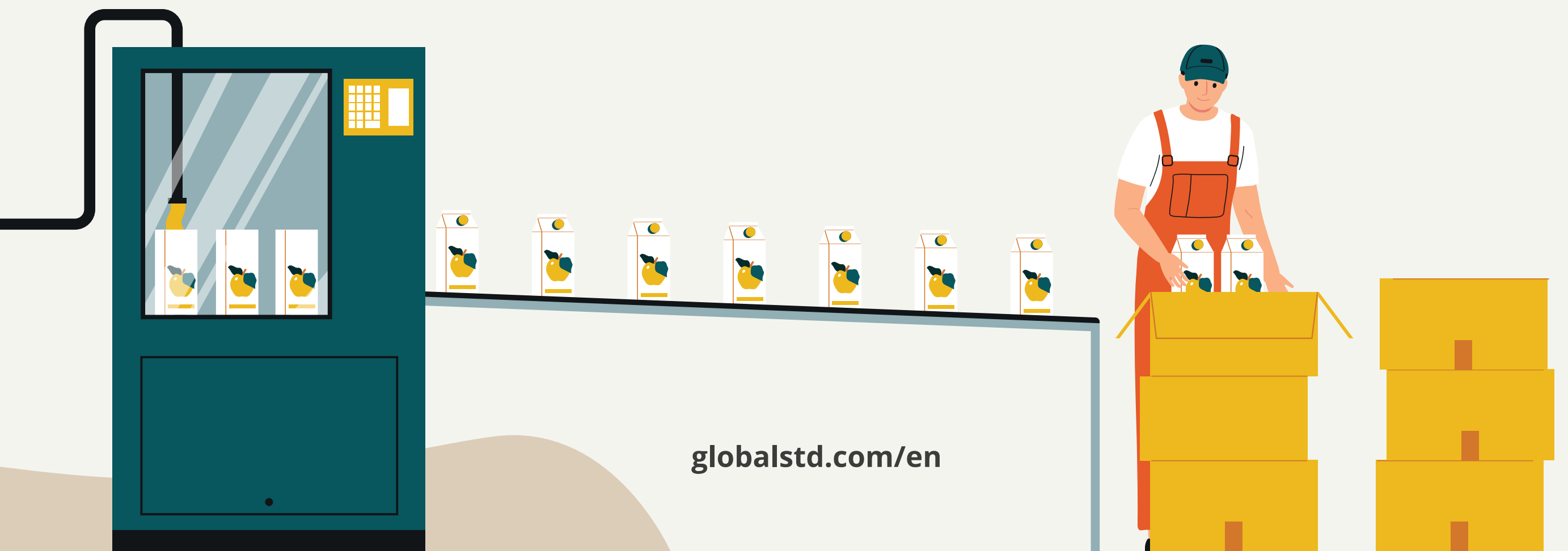
- Hazard-based risk management.
- Hygiene control.
- Functional packaging quality.

### Who is it for?

Packaging manufacturers.

### Benefits:

- Access to global markets.
- Waste reduction.
- Supply chain integrity.



## What is it?

A management program designed to control the presence of gluten through a system of preventive controls.

## Key features:

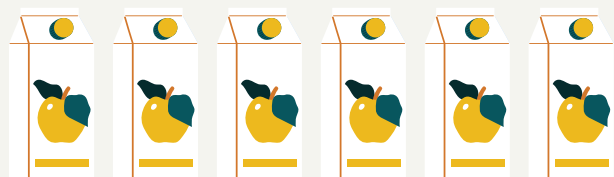
- Preventive approach.
- Rapid risk identification and management.
- Systemic approach to prevent gluten contamination.

## Who is it for?

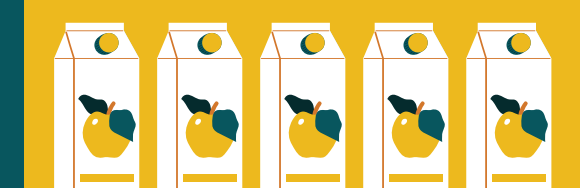
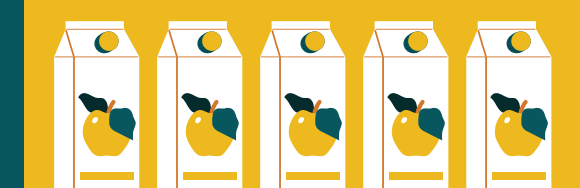
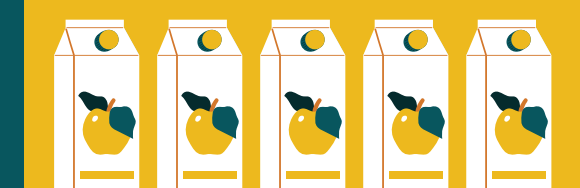
- Food manufacturers.
- Ingredient manufacturers.

## Benefits:

- Market differentiation.
- Confidence from celiac consumers.
- Mitigation of cross-contamination risks.



**JUICE**



**JUICE**

### What is it?

A standard that establishes the requirements for facilities to systematically store and distribute products, ensuring their safety, integrity, and quality are maintained.

### Key features:

- Warehouse and vehicle management.
- Vehicle maintenance.
- Inventory control.

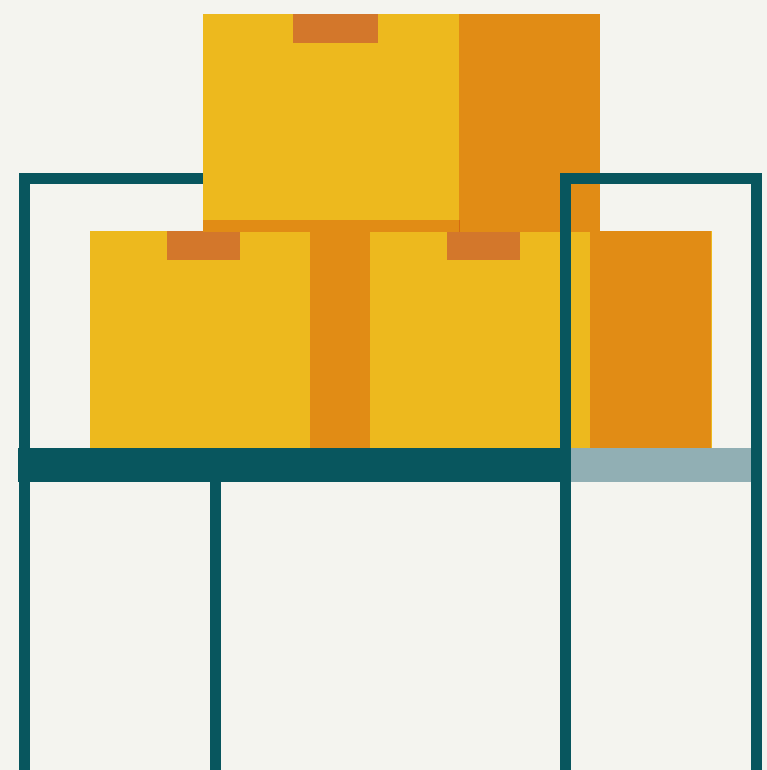
### Who is it for?

- Logistics services.
- Warehousing services.
- Wholesalers and retailers.

### Benefits:

- Traceability.
- Reduced product loss.
- Greater market credibility and recognition.

**References:** British Retail Consortium (BRC). *BRCGS Standards*. Retrieved online from: Global Supply Chain Assurance el 21/04/2026.





[globalstd.com/en](https://globalstd.com/en)